

Bonfino

Orion Stroller

User's Manual

Age Group

0-36
MONTHS



Bonfino

Imported & Marketed by:
FirstCry Retail DWC-LLC,
Plot Number FB -91,
Dubai South Logistics District,
Dubai South, Dubai.






For Any Feedback, Contact
Email: care@firstcry.ae
Customer Care: +9714806 3800
(From 9 AM to 9 PM UAE time from Monday to Saturday
Sunday from 12 PM to 10 PM)

1. Parts & Accessories



Note - Please take a few minutes to read this manual. This will help you assemble and use the stroller suitably. Keep this manual for future reference.

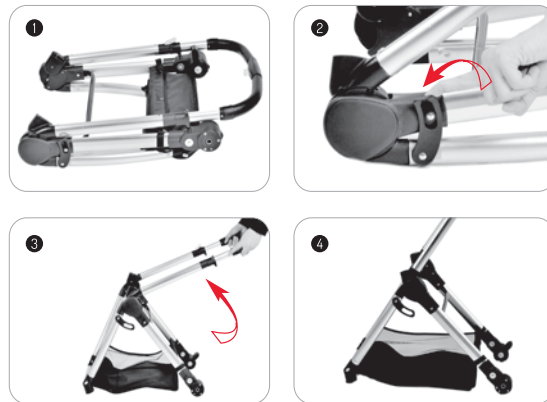
Before assembly, please double check all parts as shown are included in the package. For any missing or defective parts, or sharp edges, please contact customer service immediately. To guarantee the service life of the stroller, please use it correctly under the instructions and make it through inspection regularly. Never use it if any parts are missing or broken.

		
REAR WHEELS x 2PCS	FRONT WHEELS x 2PCS	Front Handrail x 1PC
		
Stroller Frame x 1PC	Seat Unit x 1PC	

Please check if all those parts are included when you open the box, if there are any missing parts, please contact the customer care/manufacturer.

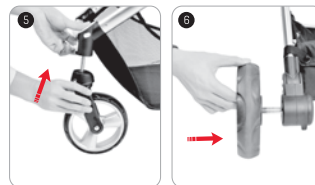
Assembly Instructions

Opening the Stroller



According to fig 1/2/3/4, release the folding hook, which keeps the stroller closed and then lift up the handle as the arrow shows. The stroller will open completely when you hear a "click" sound.

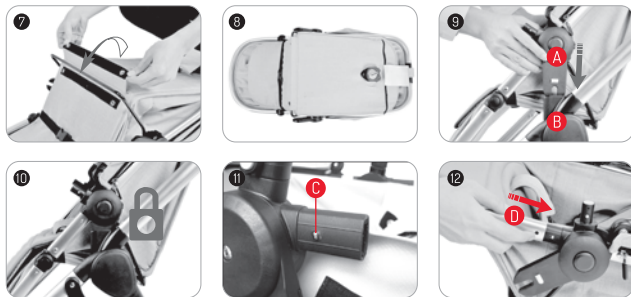
Assemble the Wheels



1. Assembling the front wheel: As shown in fig 5, fix the front wheel axles into the front leg housing and fix it completely until you hear a "click" sound.

2. Assembling the rear wheel: As shown in fig 6, fix the rear wheel axles into the rear wheel housing and fix it completely until you hear a "click" sound.

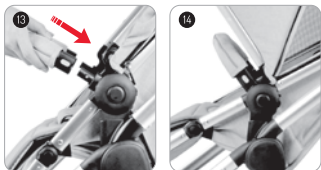
Seat Unit Assembly



1. Fasten the velcro in the direction of the arrow as shown in fig 7 and then attach the button to the bottom of the seat pad. The seat unit is now completely assembled, as shown in fig 8.

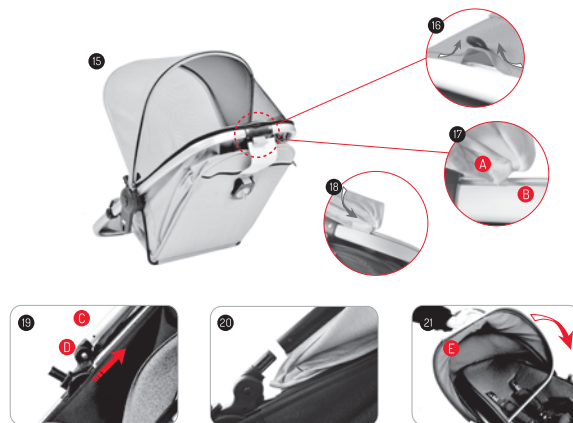
2. **Seat Unit Assembly:** As shown in fig 9, fix both adaptors A of the seat unit onto the seat supporting base B simultaneously; they are fixed together firmly when you hear a “click” sound.

3. **How to Fix the Footrest Leg:** According to fig 1, press both sides of clips C with your finger, then push leg D into the plastic connecting parts, it is fixed when you hear a “click” sound.



4. **How to Fix the Handrail:** As shown in fig 13/14, grip the handrail and press down the white buttons on both sides simultaneously, then fix the handrail on both sides of the stroller. It is fixed when you hear a “click” sound.

Assembly Instructions



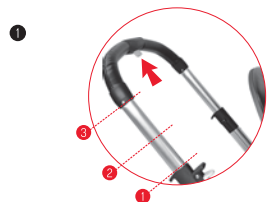
1. **Canopy Detachment:** Push both sides of the canopy tube E out from the plastic holder as the arrow shows, see fig 19/20; then pull out the canopy tube E from the front fabric as the arrow shows, see fig 16, pull out the canopy fabric as the arrow shows, the canopy can now be detached completely.



2. **Canopy Assembly:** See fig 17/18. Insert the rear-end A of the canopy fabric into the seat slot B, one hand press and push the fabric into the slot and another hand pulling the front of the fabric at the same time as the arrow shows, the canopy can be half-assembled. See 22/23/24, insert the front-end C of the canopy fabric into the canopy tube E as the arrow shows; then fix both sides of the canopy tube to the slot D as the arrow shows, the canopy can be assembled completely, see fig 15.

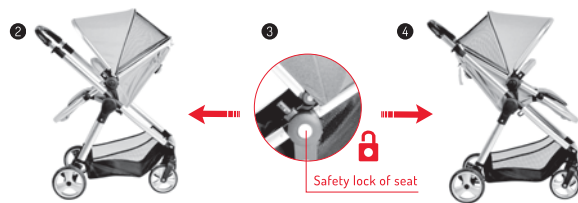
Functional Instructions

1. Handle Function



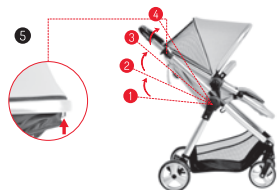
Handle height adjustment; see fig. 1, press down the one-hand button, pull up or down the handle. It is convenient to adjust the handle height.

2. Reversible Seat



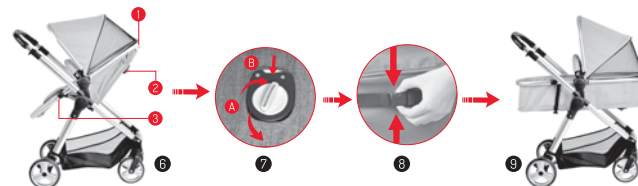
Quickly release the seat unit; see fig 2/3/4, press down the safety lock on both sides of the seat at the same time and lift it up. The seat can take down quickly or put the seat unit in the opposite direction.

3. Adjustable Seat



Press down the adjuster on the backrest or rotate the knob; the angle of the backrest is adjustable. The seat can be adjusted in 4 positions.

4. Converting the Seat Unit to Carrycot



Firstly, reverse the seat unit as shown in fig 6, and press button 1 to adjust the seat unit to a horizontal position, then press button 2 in B way as shown in fig 7, and finally release the buckle 3 as shown in fig 8 to change the seat unit into the sleeping cot as shown in fig 9; on the contrary, rotate the button 2 clockwise in A way, and fasten the buckle 3 to change the sleeping cot into the seat unit.

5. Backrest & Footrest Function



Press down the footrest buttons and move it up and down, the footrest can be adjustable in 2 positions, see fig 10.

6. Quick Release the Front Handrail



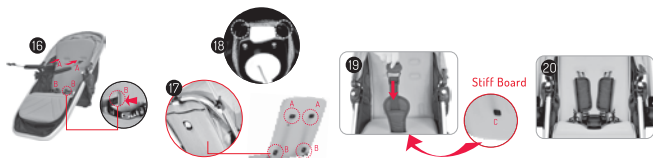
See fig 11, Press down the button on both sides, then pull out the handrail and it can be released quickly.

7. Wheels Function



- 1. Front wheel lock:** Pull the front wheel locking lever in the direction of the arrow, then the wheel is locked in place when you hear a “click” sound. See fig 12.
- 2. Front wheels quick release:** Press down the front wheel quick-release button, then front wheels will be released automatically, see fig 13.
- 3. Rear wheels brake:** To apply the brakes by pressing the lock lever as shown in fig 14, press the brake lever in the same way to release the stroller. (Red means in brake condition, Green means in movement condition)
- 4. Detachable rear wheels:** As shown in fig 15, press the quick-release button in the direction of the arrow, then you can pull out the wheels quickly.

8. Safety Belt Assembly



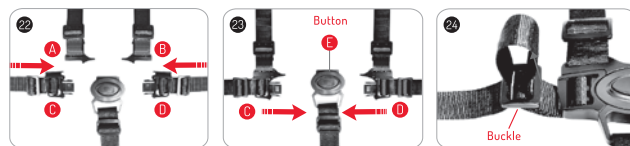
1. Pass the buckles of shoulder belt A and waist belt B through the loops located on the seat pad and the stiff board inside the seat pad. Make sure they are firmly attached before use. (See fig 16/17)
2. Adjust the safety belt height by pulling out the cloth marked in fig 18. Follow the same installation method as shown in fig 16/17.
3. Pass the crotch belt through the seat pad and the stiff board inside the seat pad as the arrow shows in fig 19. Always make sure they are attached firmly before use. The safety belts are correctly assembled as fig 20.

9. Safety Belt Detachment

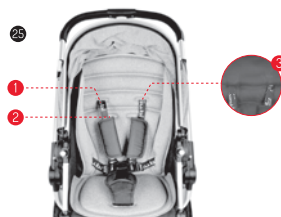


Detach the shoulder belt H and waist belt I by pulling out the buckles from the seat pad (see fig 21).

10. Attach The Buckles



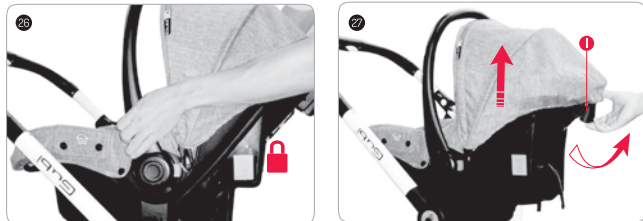
- 1. Attach the buckles:** (See fig 22), attach the buckles on the shoulder belt (C, D) on the buckles of the waist belt (A, B). Attach the waist buckles on the central buckle E until you hear a “click” sound. (See fig 23)
- 2. Release the belt:** (See fig 23), press down the central button to release the waist strap.
- 3. Adjust the seat belt:** Adjust the shoulder and waist strap according to the size of the child in a comfortable position. (See fig 24)



4. The height of the shoulder belt is adjustable up to 2 positions (see fig 25), the lowest position (position 2) is only for the baby under 6 months, and position 1 is for the baby between 6 months and 36 months. Adjust the height of the seat belt by pulling buckles out of the seat. Then attach them to the same level, making sure the buckles are in their positions.

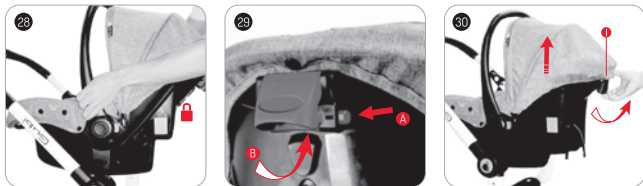
Optional Accessories

Using Car Seat Without Second Lock



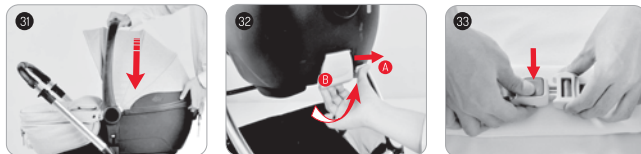
1. **Assemble the car seat:** According to fig 26, put the car seat onto the seat supporting base; push down the car seat until you hear a "click" sound.
2. **Disassemble the car seat:** Raise the button I at the back of the car seat and lift it up to release the car seat from the stroller. (see fig 27/28)

Using Car Seat With Lock



1. **Assemble the car seat:** According to fig 28, place the car seat onto the seat supporting base, push down the car seat until you hear a "click" sound.
2. **Disassemble the car seat:** Press button A on the right with your thumb as the direction shows and pull up button B simultaneously, then lift the car seat up to release it from the stroller. (See fig 29/30)

How to Use the Carry Cot



1. **Assemble the carry cot:** Place the carrycot onto the supporting bases of the stroller, then push down the carrycot until you hear a "click" sound. (See fig 31)
2. **Disassembly:** Push the button to the right as the direction of arrow A with your thumb and pull up the pull-button simultaneously as shown in the arrow B, then lift the carrycot up to release it from the stroller.
3. **Safety Belt:** The carrycot is equipped with a safety belt inside. Press the red button as shown in fig 33, the safety buckle will be released.

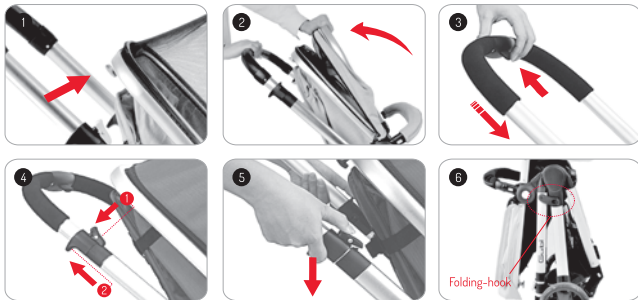
Placing the Mama Bag



As shown in fig 34, position the straps of the mama bag on the handle of the stroller and hang the mama bag on the stroller as shown in fig 35.

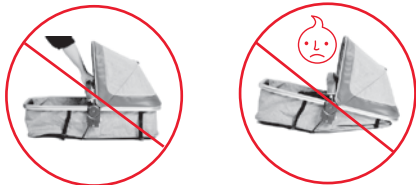
NOTE: The weight of the bag cannot exceed more than 1.5 kgs when it is hanging on the stroller.

Folding the Stroller



1. See fig 1, adjust the backrest to the top position before folding the stroller.
2. **Fold the Hood:** See fig 2, pull the hood as the arrow shows to fold the hood.
3. **Fold the Handle:** See fig 3, press down the button on the handle and then pull down the handle.
4. **Fold the Stroller:** See fig4, press down the folding button 1, and pull the second folding button 2 up simultaneously on both sides of the handle, then place the stroller as shown in fig 5/6. The stroller will be folded automatically with the folding hook closed.

CAUTION!



The seat parts is only use for seat and sleeping cot.
Please don't use as carry cot.



WARNING!

To avoid serious injury from falling or sliding out of the stroller, always use the 5-point safety harness. Snap buckle together.

- Adjust the belt to get a snug fit around the child.
- To Open Buckle
- Press in the middle of the buckle to release.

For your child's safety

- This product is suitable for one child at a time
- This product is suitable for children who cannot sit unaided, roll over and cannot push themselves up on their hands and knees
- Never leave the child unattended in the stroller
- Do not let other children play with the product
- Never use the stroller on stairs or escalators. Be careful while going up or down the slope
- Any load on the push bar and or at the back of the backrest of the stroller will affect the balance
- This stroller is designed for accommodating babies between 0-36 months with a maximum bearing capacity of 15kgs
- Do not place things more than 3kg in the storage basket
- Do not hand purse, shopping bag, parcel or accessories on the handle
- Wheels should be locked before placing and removing the children
- Ensure all the locking devices are correctly engaged before use
- Please remove the seat belt from the stroller while using it as a sleeping cot.
- In order to ensure your baby is safe, always keep the car seat or carrycot facing you while using them.
- Sitting position is not suitable for children below 6 months

- Always use the safety harness
- Not advised to use on very rough terrains
- This stroller is not suitable for running and skating
- Make sure the children are at a safe distance while unfolding and folding the stroller
- Please check the stroller for any loose parts, damaged or broken parts before each use
- Replace at the first signs of damage

Cleaning and Maintenance

• Cloth Cleaning

1. It is recommended to use a damp cloth for dust and general stains
2. Use mild detergent liquid
3. Seat cover and canopy cover are not machine washable
4. Leave the washed cloth cover in a ventilated place and dry it. Do not expose it to direct sunlight
5. Do not brush the cloth cover hard as it may cause damage to the fabric

• Frame Cleaning

1. Do not use a corrosive liquid to scrub the frame
2. Use a wet cloth and mild liquid cleaner to wash the frame