



## 1. Parts & Accessories



**Note** – Please take a few minutes to read this manual. This will help you assemble and use the stroller suitably. Keep this manual for future reference.

Before assembly, please double check all parts as shown are included in the package. For any missing or defective parts, or sharp edges, please contact customer service immediately. To guarantee the service life of the stroller, please use it correctly under the instructions and make it through inspection regularly. Never use it if any parts are missing or broken.

		
CANOPY x 1PC	HANDRAIL x 1PC	SLEEPING PAD x 1PC
		
SEAT UNIT x 1PC	STROLLER FRAME x 1PC	BASKET x 1PC
		
REAR WHEELS x 2PCS	FRONT WHEELS x 1PCS	

Please check if all those parts are included when you open the box, if there are any missing parts, please contact the customer care/manufacturer.

## Assembling the Stroller

### Frame Assembly



According to Fig 1, release the folding hook, which keeps the stroller closed. Lift up the handle as the arrow shown in Fig 2, the stroller will be opened fully when you hear a "CLICK" (See Fig 3).

Wear basket tube A into the front leg of the frame, see fig4/5; Insert the fabric into tube B, see fig 6; Press the spring strip, then insert the basket tube A into it. The assembly of the basket is finished when you hear "click". see fig 7.

Use the fabric to cover the iron pipe, then fasten the buckle. The frame is fixed and completed as shown in fig10.

### Wheels Assembly



**Assembly of the Front Wheel:** Insert the front wheel axle into the front wheel base, it is fixed when you hear a "CLICK".(see Fig 11/12) .

**Rear Wheels Assembly:** Insert the axle and fix it into the side hole of wheel base (see Fig 13). The wheels are fixed firmly until you hear a "CLICK" sound (see Fig 14).

The rear wheels are fixed firmly after you release the button shown in Fig 15.

## Seat Unit Assembly



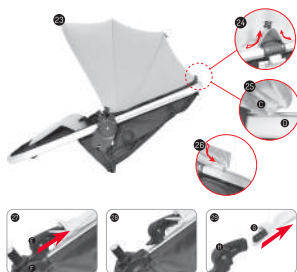
**1. Assembly of Stroller Body:** Open the stroller body as the arrow shows, raise the tube so that you can insert it into stroller body, see Fig 17/18; Insert the down tube as arrow shows, it is fixed when you hear a "CLICK" sound. see Fig 19.

## Seat Unit Assembly



**2. Seat Bottom Assembly:** Fasten the velcros to the tube as the arrow shows in fig 20; then attach the buckles of waist belt to the tube under the seat (see fig 21/22), the fabric seat is completely assembled.

## Canopy Assembly & Disassembly



**3. Removing the Canopy:** Press on the plastic E and remove from slot F as the arrow shows, see fig 27/28, take out the elastic band from slot H, then remove the metal bar G as the arrow shows, see fig 29; see fig 24, remove canopy fabric as the arrow shows, and the canopy can be removed easily.



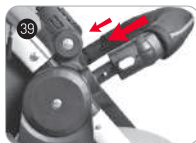
**4. Assembly of the Canopy:** Insert the fabric of the end of canopy into seat slot D, one hand press and push the fabric into slot and another hand pulling the front of fabric at the same time as the arrow shows, the canopy fabric can be assembled, see fig 30. Insert the canopy post into the canopy base as the arrow shows, make sure the dot I of base is fixed in the hole of the post. See fig 31/32, pass the metal bar through the canopy fabric and then insert to the slot of the canopy post as the arrow shows, see fig 33. Hang the elastic band to the plastic hook H, see fig 33, canopy is assembled completely as shown on fig 23.



**5. Seat Unit Assembly:** See fig 34&35, fix the carrycot into the seat supporting base and push down the carry cot as the direction of the arrow and the seat is completely assembled.



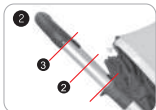
**6. Seat Pad Assembly:** Release the seat safety buckles, take off the shoulder protection sleeve (see fig 36), put the sleeping pad in the seat and get through the safety belt (see fig 37), then fix the shoulder protection sleeve to the safety belt, finally close the buckles, the assembly is finished (see fig 38).



**7. Handrail Release:** Press down the both sides of buttons, pull out the handrail, then the handrail can be released quickly, see fig 39/40.

## Functional Instructions

### 1. Handle Adjustment



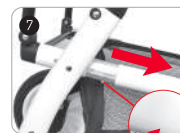
The handle can be adjusted in 3 positions. Adjust the handle to the required position by pressing down the button on the handle (see Fig 1/ 2).

### 2. Handle Function



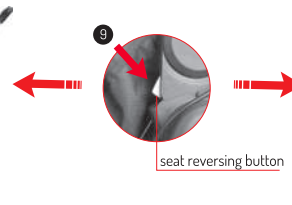
Press down one of the handrail buttons, pull out the handrail, it is easy for the baby to get in or get off the seat when it is open (see fig3/4). Press down both buttons and pull out the handle at the same time, the handle will be removed.

### 3. Assembly & Disassembly of the Basket



Unlock the buckle as fig 6; see fig 7. Press on the shrapnel, then pull the basket tube; take out the cloth as the arrow shows, and then the basket is completely disassembled as fig 8 shows. In contrast, the basket will be assembled well.

### 4. Reversing the Seat



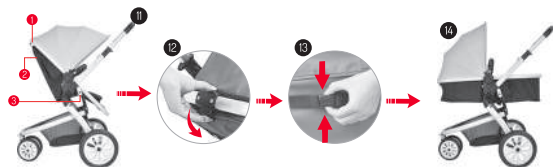
Press down the seat reversing buttons on two sides simultaneously and take out the seat, then put it in the contrary direction of the stroller. Be sure it is safely fixed, then the reversion is finished.

### 5. Seat Reclining Adjustment



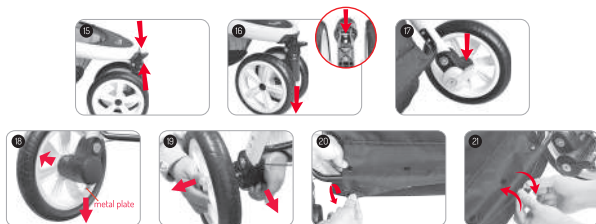
The seat can be reclined in 4 positions. Press down the reclining adjustment button and push up or down the seat, then the backrest is adjustable (see Fig 10).

## 6. Carrycot Conversion



Reverse the seat first, adjust the seat adjuster (1) to keep the seat at a level place (See fig 11), release the belt buckle (2), (3) as fig 12 and fig 13 shows, then it can be used as a sleeping cot (See fig 14). The sleeping basket can be converted into a seat.

## 7. Wheel Function



**1. Usage of the front wheel:** Press the front wheel locating lever as the arrow shows, the front wheel is locked simply when you hear “click”. In contrast, the front is released.

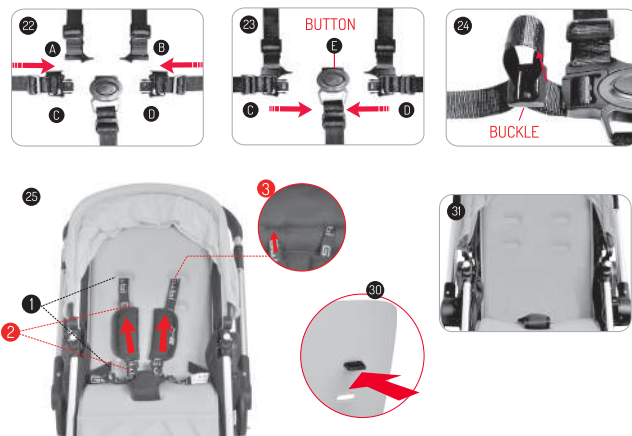
**2. Rear wheel quickly taken-off button:** Press the rear wheel quickly taken-off button as the arrow shows, pull the front wheel, then you can take out the front wheel easily.

**3. Rear wheel brake:** Press down the braking lever as the arrow shows, the rear wheel will be braked. Press the lever again, the brake is released. (see fig 21)

**4. Rear wheel quick release:** One hand to pull down the metal plate, another hand to hold the wheel to pull out. The rear wheel is completely removed as Fig 19.

**5. Adjust the nut of the brake line:** When the brake doesn't work well, open the buckle on the basket, pull out the brake line to adjust the nut on it (see Fig 20/21).

## 8. Using the Safety Belt



**1. Attach the buckles:** (See Fig 22), Attach the buckles on the shoulder belt (A, B) on the buckles of the waist belt (C, D). And then attached the waist buckles on the central buckle E until you hear a CLICK (See Fig 23).

**2. Release the belt:** (See Fig 23), Press down the central button to release the waist strap.

**3. Adjust the seat belt:** Adjust the shoulder and waist strap according to the size of the child in a comfortable position (See Fig 24).

**4. Adjusting the height:** The height of the shoulder belt is adjustable by 2 positions (see Fig 25), the lowest position (position (2)) is only for the baby under 6 months, and the position (1) is for the baby between 6 months and 36 months. Adjust the height of the seat belt by pulling buckles out of the seat. Then attach them to the same level, and ensure the buckles are in their positions.

**5. Safety belt detachment:** Detach the shoulder belt H and waist belt I by pulling out the buckles from the seat pad (see Fig 30/31).

## Optional Accessories

### 1. How to Use the Car Seat



**1. Car Seat Assembly:** Remove the stroller seat, insert both sides of adaptors of the car seat to the base slots of the stroller at the same time, see Fig 1. Press down the car seat until you hear a CLICK, (see Fig 2). The seat is placed on the stroller firmly.

**2. Car Seat Detachment:** Pull out the button at the back of the car seat to release the car seat from the stroller (see Fig 3).

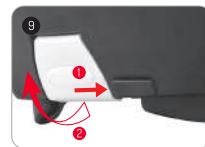
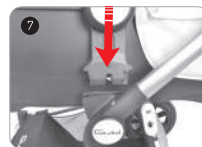
### 2. How to Use the Carrycot



#### 1<sup>st</sup> Type of Carrycot

**1. Carry cot assembly:** Take the carrycot and match the adaptors, push down the carry cot until you hear a "CLICK" sound (See Fig 4), the carry cot is firmly assembled as Fig 5 shows.

**2. Carry cot disassembly:** Press the buttons on both sides of the carry cot simultaneously to release the carrycot from the stroller. (See Fig 6).

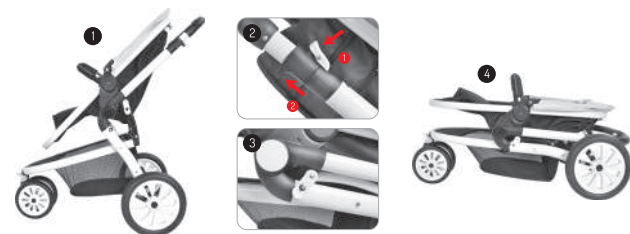


#### 2<sup>nd</sup> Type of Carrycot

**1. Assemble the carry cot:** Put the carrycot onto the supporting base as the arrow shows on Fig 7, push down the carry cot until you hear a "CLICK" sound.

**2. Disassembly of carry cot:** Open the lock on place ① as the arrow shows in fig 9. Then pull the pulling grip up as the arrow on place ②, and lift the carry cot up to release it from the stroller.

## Folding The Stroller



**1.** Adjust the handle to the lowest place, set the backrest to the top, fold the canopy. (See Fig1).

**2.** Press down the 2nd lock button as the arrow shows (1) and simultaneously pull up the stroller lock button (2) on both sides. Then the stroller will be folded automatically. (See Fig2).

**3.** The stroller is firmly folded when the folding hook is fixed in its position. (See Fig3/4)



### **WARNING!**

To avoid serious injury from falling or sliding out of the stroller, always use the 5-point safety harness. Snap buckle together.

- Adjust the belt to get a snug fit around the child.
- To Open Buckle
- Press in the middle of the buckle to release.

### **For your child's safety**

- This product is suitable for one child at a time
- This product is suitable for children who cannot sit unaided, roll over and cannot push themselves up on their hands and knees
- Never leave the child unattended in the stroller
- Do not let other children play with the product
- Never use the stroller on stairs or escalators. Be careful while going up or down the slope
- Any load on the push bar and or at the back of the backrest of the stroller will affect the balance
- This stroller is designed for accommodating babies between 0-36 months with a maximum bearing capacity of 15kgs
- Do not place things more than 2kg in the storage basket
- The footrest bearing capacity is 5kgs and the cup holder can bear essentials up to 0.5kgs
- Do not hang purse, shopping bag, parcel or accessories on the handle
- Wheels should be locked before placing and removing the children
- Ensure all the locking devices are correctly engaged before use
- Please remove the seat belt from the stroller while using it as a sleeping cot.
- In order to ensure your baby is safe, always keep the car seat or carrycot facing you while using them.

- Avoid using a cushion thicker than 30mm when your baby is sleeping in
- Sitting position is not suitable for children below 6 months
- Always use the safety harness
- Not advised to use on very rough terrains
- This stroller is not suitable for running and skating
- Make sure the children are at a safe distance while unfolding and folding the stroller
- Please check the stroller for any loose parts, damaged or broken parts before each use
- Replace at the first signs of damage

### **Cleaning and Maintenance**

#### **• Cloth Cleaning**

1. It is recommended to use a damp cloth for dust and general stains
2. Use mild detergent liquid
3. Seat cover and canopy cover are not machine washable
4. Leave the washed cloth cover in a ventilated place and dry it. Do not expose it to direct sunlight
5. Do not brush the cloth cover hard as it may cause damage to the fabric

#### **• Frame Cleaning**

1. Do not use a corrosive liquid to scrub the frame
2. Use a wet cloth and mild liquid cleaner to wash the frame