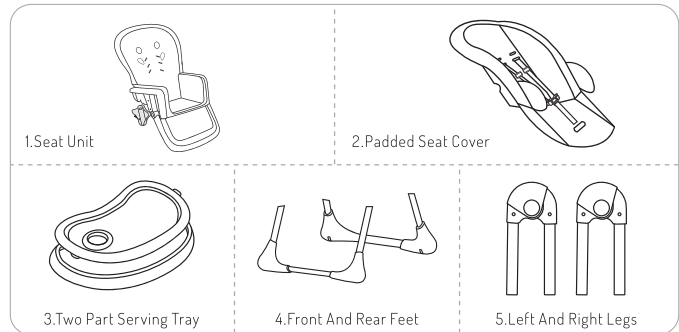


Note – Please take a few minutes to read this manual. This will help you assemble and use the high chair suitably. Keep this manual for future reference.

Before assembly, please double check all parts as shown are included in the package. For any missing or defective parts, or sharp edges, please contact customer service immediately. To guarantee the service life of the high chair, please use it correctly under the instructions and make it through inspection regularly. Never use it if any parts are missing or broken.

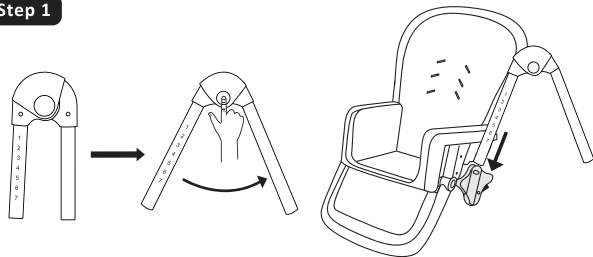
Parts & Accessories



1. Seat Unit
2. Padded Seat Cover
3. Two Part Serving Tray
4. Front And Rear Feet
5. Left And Right Legs

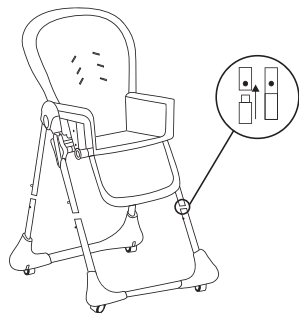
Assembly Instructions

Step 1



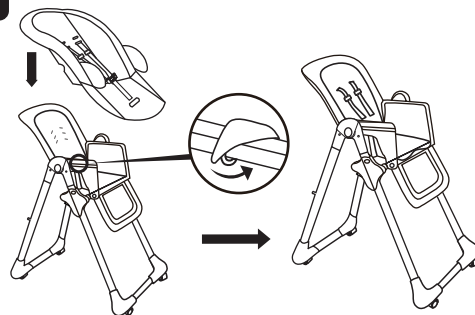
Take the legs, press and hold down the round button and extend the leg then release the round button. The leg with the letter "R" for right side, "L" for left side. Insert the legs into adjusting brackets. The leg with number marks face outside. There are seven positions to adjust height.

Step 2



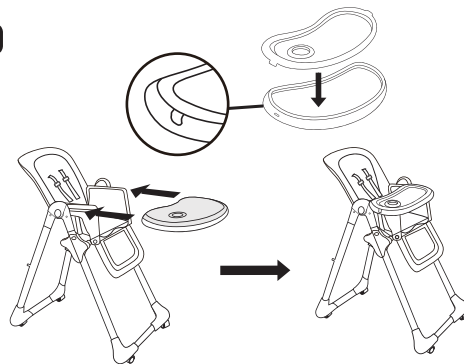
Take out the front and rear feet, turn the highchair upside down. Push firmly on the foot at either end until each of the two sprung pins click into place within the small hole in the foot. Repeat the same procedure for the other foot.

Step 3



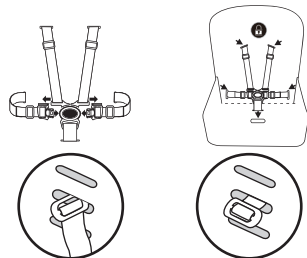
Slide the pocket of the seat cover back over the curved back frame. Secure the seat sides by wrapping them around the frame and fastening press studs at each side of the seat.

Step 4



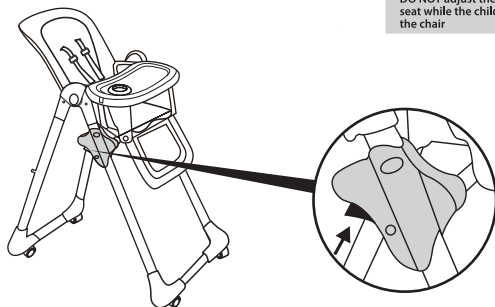
Position the tray to the front of the arms, pull the front lever on the underside of the tray, while sliding the tray along with the slot to the position required. The tray has three positions as indicated on the arm rests.

Step 5



A 5-point safety harness is provided to restrain your child and should always be worn. Fit the buckle through the cushion to the seat, ensure the buckle is completely pulled out of the slot and kept in a horizontal position. To unfasten, push the button on the buckle and pull the clips. To fasten, push the waist strap slips into the buckle until they lock in place. Sliding adjusters are fitted on the shoulder straps and waist straps. The harness should be carefully adjusted so that it fits your child comfortably.

Step 6

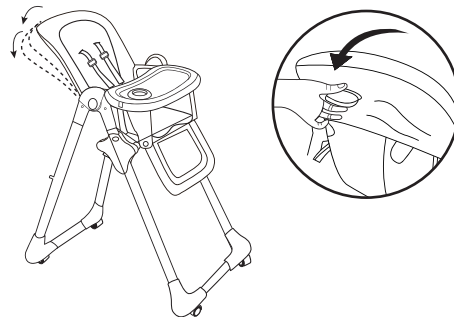


⚠ WARNING

DO NOT adjust the height of the seat while the child is sitting in the chair

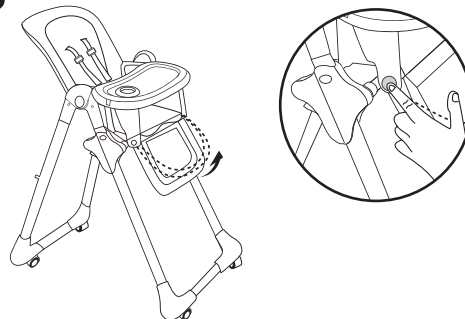
There's 7 heights of the seat. To adjust the height of the seat, push in both of the locks at the required height.

Step 7



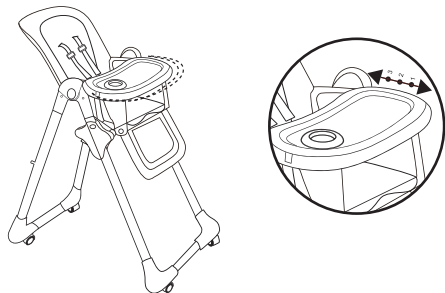
To adjust the angle of the seat, lift the plastic lever on the back of the seat and position it as required, releasing the mechanism to secure it into place.

Step 8



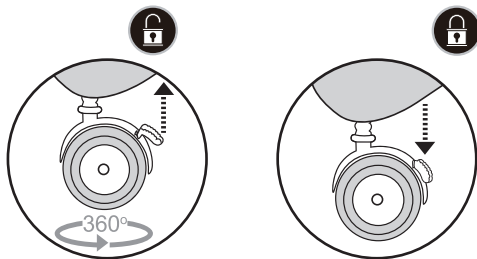
To adjust the footrest, push in both sides of the button and simultaneously raise or lower the footrest, releasing both buttons at the required position.

Step 9



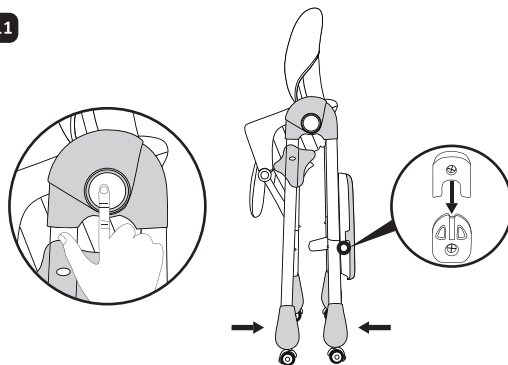
Release the levers to a required lock position until a double click is heard signaling the tray is securely locked.

Step 10



Apply the stop function on the wheel to keep the highchair stable in position.

Step 11



Remove the toy tray to fit to the back of the highchair. Push in both of the height adjusting locks and simultaneously lower the seat of the highchair to position 7, press in both of the release catches on the side legs and slide the rear legs forward. Check the highchair is correctly folded in its locked position before leaving to stand free.



- Adult assembly required.
- Never leave the child unattended.
- Always keep the child in view while in the highchair.
- Always use restraints, and adjust to fit snugly.
- Stay close and watch the child during use.
- Secure your child at all times with the restraint system provided, both in the reclined and upright positions.
- The tray is not designed to hold your child in the chair.
- It is recommended that the high chair be used only by children capable of sitting upright unassisted.
- Always lock the wheels when the child is sitting in the high chair, or when the highchair is open but not in use.
- Ensure placing the highchair on a horizontal, stable surface. Never place the highchair near stairs or steps. Do not move the chair with a child in it.
- The high chair is designed to accommodate one child at a time.
- Discard use if any part is broken, torn, or missing.
- Ensure that all components are correctly fitted and adjusted before and after each use.
- Do not place any heavy bags, packages, or other items on the highchair tray. They may cause the chair to tip over.
- This highchair is recommended for children who can sit upright unassisted OR do not weigh more than 25 kg and are not more than 36 months old.
- Do not place the chair near any heat source, electric bar, fires, gas fires, etc., or where a child could gain access to any other kind of hazard.
- Ensure all users are familiar with the product's operation. It should always open and fold easily. If it does not, do not force the mechanism, instead refer to the assembly instructions.
- All hazards such as electrical flex should be kept out of reach of the child in the high chair.

Wash Care Instructions

Maintenance

- Periodic maintenance is required to ensure the high is in good working order.
- Regularly check all parts of the product to ensure that they are operating correctly and for any signs of wear or damage.

Cleaning

- Never clean any part of the highchair with abrasive, ammonia-based, bleach-based or spirit-type cleansers.
- Ensure the product is completely dry after cleaning before use or storage.
- Make sure the highchair is stored in a dry place to prevent mold or mildew development.
- Frame Cleaning: Wipe with a damp cloth and wipe dry with a soft cloth.
- Harness Cleaning: Sponge clean with a mild soap and water solution. Rinse and wipe dry.