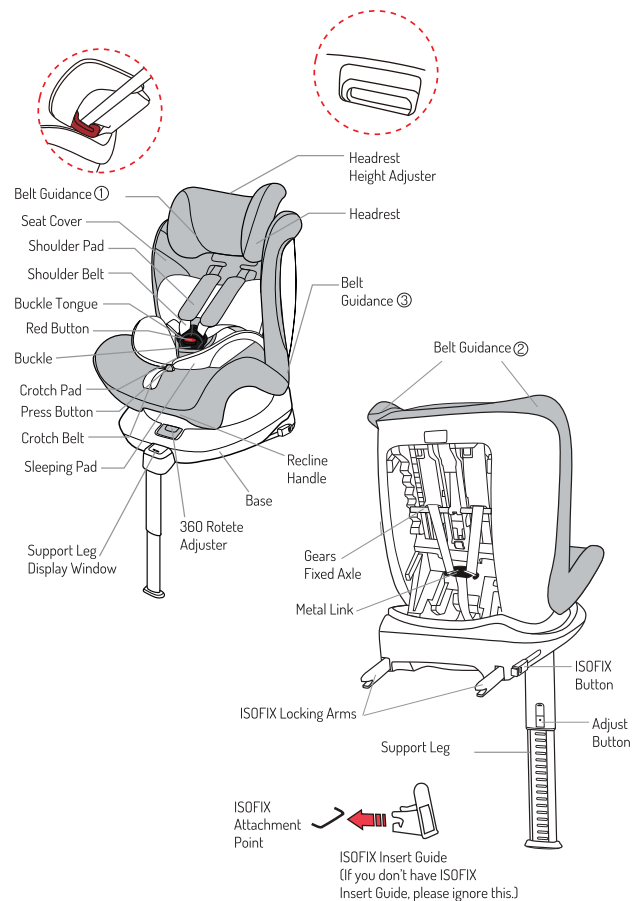


1. Parts & Accessories

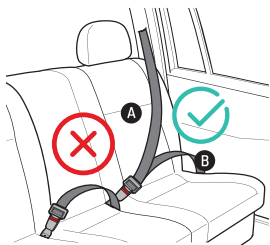


Note – Please take a few minutes to read this manual. This will help you assemble and use the car seat suitably. Keep this manual for future reference.

Before assembly, please double check all parts as shown are included in the package. For any missing or defective parts, or sharp edges, please contact customer service immediately. To guarantee the service life of the car seat, please use it correctly under the instructions and make it through inspection regularly. Never use it if any parts are missing or broken.

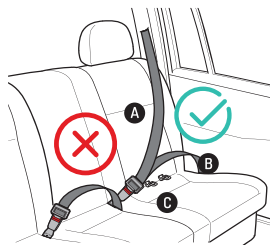
1. Installation

- A Car Safety Belt-Diagonal Belt
- B Car Safety Belt-Lap Belt

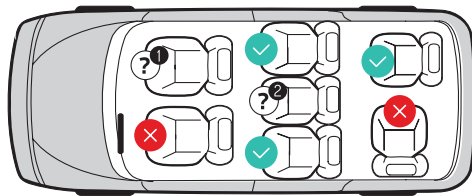


When used as a Universal category (Group 2-3), this child restraint system is suitable for seatbelt models equipped with a three-point retractor that complies with ECE R16 and does not apply to models only equipped with 2-point seat belts.

- A Car Safety Belt-Diagonal Belt
- B Car Safety Belt-Lap Belt
- C ISOFIX Attachments



When using as Semi-Universal category (Group 0+123), this child restraint system is suitable for seat belt models equipped with the three-point retractor that has passed the ECE R16 and ECE R14 requirement and is not suitable for models only equipped with 2-point seat belts.



Correct/ Proper

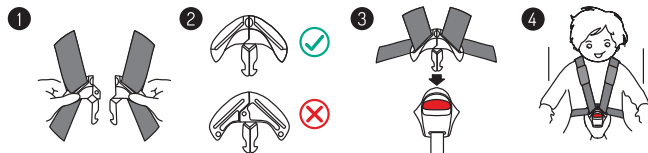


Wrong/ Improper

- ⚠ Your child's car seat cannot be installed in the front of the vehicle seat with an open airbag.

- ⚠ Your child's car seat can be installed in the rear passenger seat only with 3-point seat belt and ISOFIX attachments.

How to Use the Harness Buckle



Hold the two buckle tongues together. Make sure the right side is up. Engage them before putting them into the harness buckle until you hear a "click" sound. Pull shoulder straps to remove all slack from the lap section ensuring that the harness is lying flat and the harness buckle is locked. Open the harness buckle by pressing the red button.

Adjusting the Headrest



A. When Use in Group 0+I (Use 1-6 level)

The shoulder straps are adjusted as follows:

Loosen the shoulder straps of the child seat as much as possible. Pull the headrest height adjuster, select the correct height of the shoulder straps and engage it in the position that fits your child by releasing the adjuster.



too lower



too higher



correct



B. When Use in Group II.III (Use 7-10 level)

When the child grows up above 15KG, the headrest should use 7-10 level height. Slide the belt loops off from the gear fixed axle, place the left shoulder belt first then to the right one and you can remove the shoulder belt. Then from the front of the child seat, pull out shoulder straps through the slots, put them on the bottom of the cloth cover.

After removing them, take out the gears fixed axle from the plastic stator and store it. Pull the headrest height adjuster, select the correct height of the shoulder straps and engage it in the position that fits your child by releasing the adjuster.



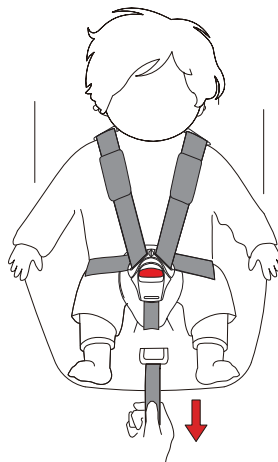
ATTENTION!

A correctly adjusted headrest ensures optimal protection for your child in the safety seat:

- The headrest must be adjusted so that the shoulder straps are at the same level as your child's shoulders.
- Keep the lower edge of the headrest as close as possible to the child's shoulder and keep a finger distance between the lower edge of the headrest and the child's shoulder.

CAUTION! The shoulder straps must not run behind the child's back, at ear height or above the ears.

Adjusting the Length of the Safety Belt



A. Tighten Safety Belt

Pull up the shoulder belt and the lap belt will tighten, then pull the crotch belt to tighten the safety belt.

Tighten the safety belt as much as possible without causing discomfort to the child. The lap belt is as low as possible and should be placed near the child's crotch not abdomen.

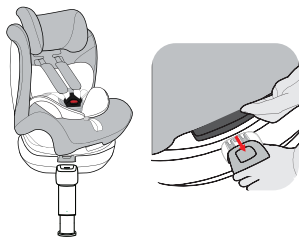
NOTE: Loose safety belt is dangerous. Please check whether the safety belt adjuster works, then tighten the safety belt. After tightening the seat belt, adjust the shoulder pads to the appropriate position on the chest.



B. Loosen the Belt

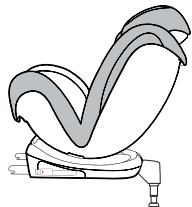
When pressing the safety belt adjuster, the other hand must grasp the safety belt under shoulder pads and pull it forward to release the safety belt.

Adjusting the Seat Rotation



Pull the rotation adjuster out with your thumb, then rotate the safety car seat to a 360° angle.

NOTE: To make sure the seat is properly fixed, rebound the rotation adjuster back every time.

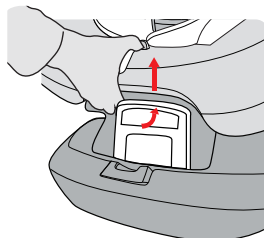


A. Rearward Direction: Group 0+I (0-18kg) must use rearward direction.

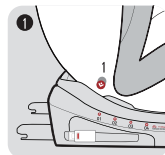


B. Forward Direction: Group I II III (9-36kg) must use forward direction.

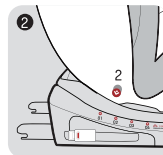
Adjusting the Angle of the Child Safety Car Seat



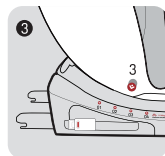
Push the recline handle up and pull the seat outward, then the seat can be adjusted.



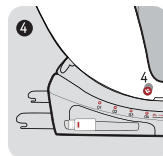
First Level



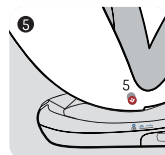
Second Level



Third Level



Fourth Level



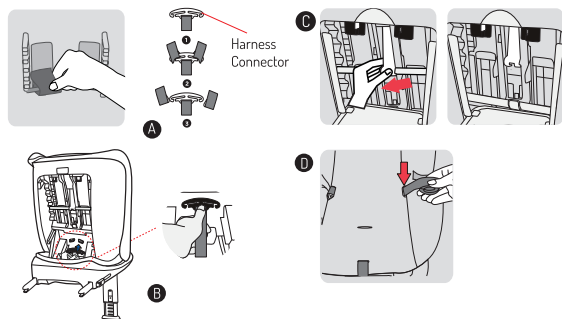
Fifth Level (Lying Level)

When the seat is in the position of the fourth level, rotate the seat to the rearward direction and the seat can be adjusted to the fifth level (Pic 5). This is only suitable for Group 0+ I (0-18 kg).

Different reclining levels for different groups:

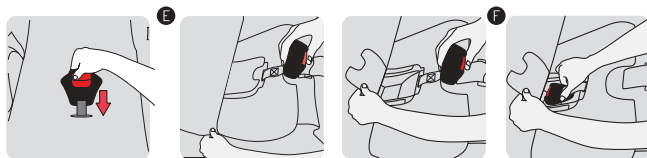
- Group I (9-8 kg): First level to fourth level (Pic 1/2/3/4)
- Group II III (15-36 kg): First Level (Pic 1)

Removing the 5-Point Harness & Storing the Accessory Part



Step 1: Removing Shoulder Pads and Belts

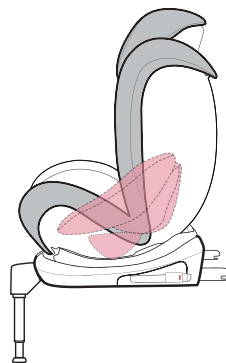
Loosen the 5-point harness of the child seat as much as possible. Remove the belt from the metal link and store the metal link behind the backrest. **(Picture A & Picture B)** Remember to tighten the safety belt. To ensure the harness connector is linked well, it can not be moved. Take the Gears Fixed Axle from the plastic stator and store it behind the backrest **(Picture C)**. Close the instruction back cover after putting the harness connector and gears fixed axle to the corresponding areas. Finally, put a redundant belt into the cloth cover. **(Picture D)**



Step 2: Storing the Buckle

Open the buckle, take out buckle tongues from the shoulder belt. Pull down the buckle cross cloth cover. Pick up the cover in the PE board and store the buckle. **(Picture E & F)**

How to Use Triangle Pad and Sleeping Pad



When the seat is rearward facing:

- 0-13KG - Use triangle and sleeping pad
- 13 KG-18KG-Remove Triangle Pad and Sleeping Pad

When the seat is forward facing:

- Remove Triangle Pad
- 9-12 KG - Use Sleeping Pad
- 12 KG-18KG - Remove Sleeping Pad

Note: Headrest cushion is only for newborns

Removing the Fabric Cover

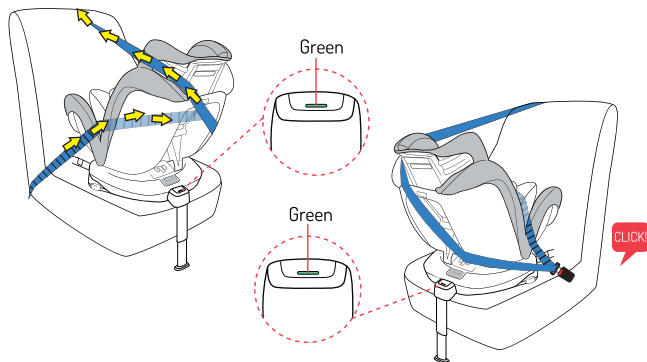
1. Remove the 5-point harness.
2. Take off the cover from the backrest and base.
3. Move the headrest of the child seat up to the highest position.
4. First take the cover off the base of the headrest, then remove the cover of the headrest.

To re-fit the cover, simply follow the above steps in reverse.

CAUTION! Never use the child seat without a correctly installed buckle.

CAUTION! Check that the harness straps are not twisted and that they have been correctly inserted in the belt slots of the cover.

1. Installed in Car with Belt



Installed in Rearward Facing Position with Belt

Group 0+ (0–13KG): Pull out the support leg, adjust it to the maximum angle. Press the adjust button of the support leg, adjust the length of the support leg so that it is in full contact with the ground of the vehicle (Display window turns into green color).

Pull the vehicle seatbelt and pass the lap belt section through the belt guidance (3) and under the sleeping cushion.

Pass the diagonal seat belt section through the belt guidance. (2)

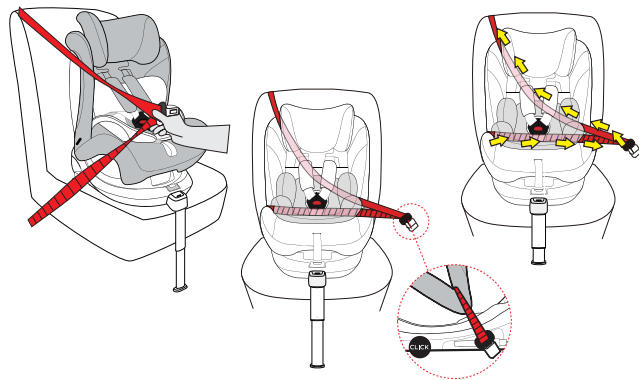
Fasten the seat belt and pull it tight, ensuring that the seat belt is not twisted.

NOTE: For children of this size group, the child seat must only be installed in the rearward facing position and at a maximum angle of inclination (lying level). To make sure that the car seat has been installed correctly, please shake it before use.

DO NOT twist the belt!

Ensure that the buckle tongues are properly locked into the vehicle seat buckle – you will hear an audible **CLICK!**

2. Installed in Forward-Facing Position with Belt



1. Group I (9–18KG): Place the child seat forward-facing on the vehicle seat (in the direction of travel). Pull out the support leg, adjust it to the maximum angle. Press the adjust button of the support leg, adjust the length of the support leg so that it is in full contact with the ground of the vehicle. (Display window turns into green color).

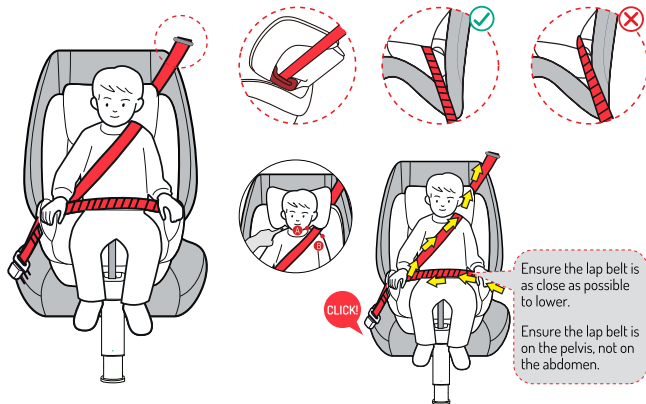
Pull the diagonal belt section through belt guidance (2). Place the lap belt section in the belt guidance. (3)

Pull out the safety belt from the back to the side, lap belt section respectively from the belt guidance (3) of the base. One side of the diagonal belt through the backrest and the belt guidance (3), another side along the upper inside.

Using your knee to press down on the child seat, tighten the vehicle seat belt as follows:

Pull the lower part of the diagonal seat belt section near the vehicle seat buckle to tighten the lap belt section.

2. Group II III (15–36KG)



NOTE: When you use this safety car seat in Group II/III, please remove the 5-point harness, sleeping pads and triangle pads. Place the child seat forward-facing on the vehicle seat (in the direction of travel).

Press the adjust button of the support leg, adjust the support leg upwards to the shortest, making it hang. Ensure that the support leg shows a red indicator.

First, pull out the belt from the belt ALR. Diagonal belt through the same side of Guidance (1), lap belt through the same side of Guidance (3), then pull the diagonal belt and lap belt together through another side of Guidance (3).

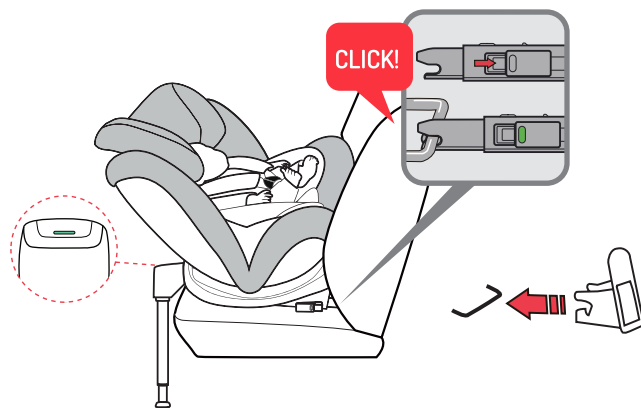
NOTE: Keep the diagonal belt at the position of the shoulder between the outside of the neck and shoulder (Middle of points A & B).

Lock the tip of the buckle into the vehicle seat buckle with a **CLICK!** noise. Follow the direction of the arrow to tighten the belt, and put the redundant belt into a cloth cover. Shake the child safety car seat to make sure it is securely attached.

CAUTION! The diagonal seat belt section must run diagonally backward. You can adjust the course of the belt with your vehicle's adjustable belt deflector on both sides.

Installed in Car with ISOFIX connector

1. Installed in Rearward Facing Position with ISOFIX connector and Support Leg; Group 0+ I (0-18KG)



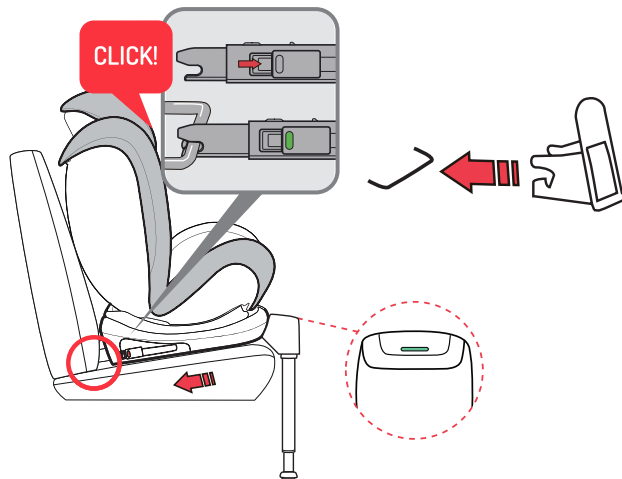
Put the ISOFIX insert guide into the two ISOFIX attachment points of your vehicle. If you don't have the ISOFIX insert guide, please ignore this step.

NOTE: The ISOFIX attachment points are located between the surface and the backrest of the vehicle seat.

Press the ISOFIX button to pull out the two locking arms from the base bottom. Pull the locking arm to and fro until you hear an audible **CLICK!** which indicates they are fully engaged. And on both sides of the locking arms' button turns into a green safety color. Pull out the support leg, adjust it to the maximum angle.

Press the adjust button of the support leg, adjust the length of the support leg so that it is in full contact with the ground of the vehicle (Display window turns into green color).

2. Installed in Forward-Facing Position with ISOFIX connector and Support Leg; Group I (9-18KG)



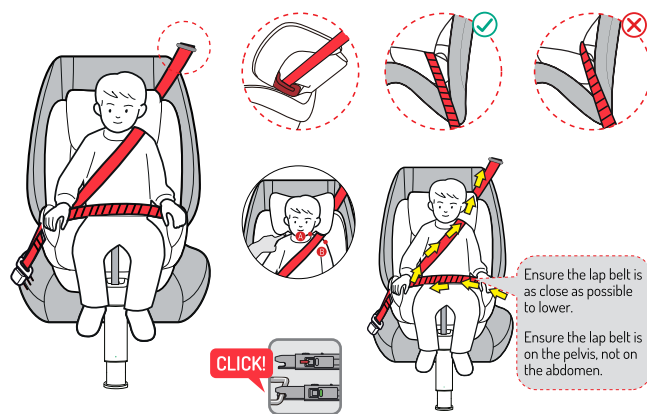
Put the ISOFIX insert guide into the two ISOFIX attachment points of your vehicle. If you don't have the ISOFIX insert guide, please ignore this step.

NOTE: The ISOFIX attachment points are located between the surface and the backrest of the vehicle seat.

Press the ISOFIX button to pull out the two locking arms from the base bottom. Pull the locking arm to and fro until you hear an audible **CLICK!** which indicates they are fully engaged. And on both sides of the locking arms' button turns into a green safety color. Pull out the support leg, adjust it to the maximum angle.

Press the adjust button of the support leg, adjust the length of the support leg so that it is in full contact with the ground of the vehicle (Display window turns into green color).

3. Installed in forward-facing position with ISOFIX connector and belt. Group II III (15-36KG)



NOTE: When you use this safety car seat in group II,III. Please remove the 5-point harness, sleeping pads and triangle pads.

Place the child seat forward-facing on the vehicle seat (in the direction of travel). Put the ISOFIX insert guide into the two ISOFIX attachment points of your vehicle. If you don't have the ISOFIX insert guide, please ignore this step.

NOTE: The ISOFIX attachment points are located between the surface and the backrest of the vehicle seat.

Press the ISOFIX button to pull out the two locking arms from the base bottom. Pull the locking arm to and fro until you hear an audible **CLICK!** which indicates they are fully engaged. And on both sides of the locking arms' button turns into a green safety color.

Press the adjust button of the support leg, adjust the support leg upwards to the shortest, making it hang. Ensure that the support leg shows a red indicator.

First, pull out the belt from the belt ALR. Diagonal belt through the same side of Guidance (1), lap belt through the same side of Guidance (3), then pull the diagonal belt and lap belt together through another side of Guidance (3).

NOTE: Keep the diagonal belt at the position of the shoulder between the outside of the neck and shoulder (Middle of points A & B)

Lock the tip of the buckle into the vehicle seat buckle when you hear an audible CLICK. Follow the direction of the arrow to tighten the belt, and put a redundant belt into the cloth cover. Shake the child safety car seat to make sure it is securely attached.

CAUTION! The diagonal seat belt section must run diagonally backward. You can adjust the course of the belt with your vehicle's adjustable belt deflector on both sides.

For Your Child's Safety

- Airbags can cause injury. Do not use this child seat on a passenger seat fitted with a front airbag unless it can be deactivated.
- Buckle failure will cause injury. Do not oil any part of the buckle.
- Always check there is no food debris or other such matter in the harness buckle.
- Never use the car seat without the backrest as it will not protect your child in the event of an accident.
- A correctly adjusted harness is essential for your child's protection. There should not be more than two fingers width between the harness and your child.
- Toxic cleaning fluids can cause damage. Never use bleach, do not iron, do not machine wash, do not tumble dry as this could damage the cover and require replacing.
- Always replace the car seat after an accident, in case of any unseen damage.
- Do not use the car seat without the seat cover. Do not replace the seat cover with any cover other than the one recommended by the manufacturer, as it directly influences the safety performance of the car seat.

- Ensure that your car seat is secured at all times while in the vehicle using the vehicle's seat belt or ISOFIX system, even when not in use. An unsecured car seat can cause injuries in the event of a collision.



CAUTION!

Keep these instructions with the car seat in case you need to refer to them again in the future. Failure to follow these instructions may affect your child's safety.

- Your car seat must be positioned and installed so that, under normal vehicle usage conditions, no part can become jammed under or between any moveable seat or in the vehicle door.
- Do not modify or add to your car seat in any way without the approval of a competent authority or the manufacturer, as this will void any warranty.
- Shade your car seat from sunlight to avoid hot items causing injury to your child.
- Do not leave your child unattended when in the car seat and in the vehicle.
- Make sure there is no loose luggage or other large objects that are likely to cause injuries in the event of an accident. These may cause injury to other occupants. Always secure loose items.
- Make sure all hard or plastic parts are stored away when not in use and therefore cannot be misplaced.
- During cold winter conditions take care that any change of clothing has not reduced the tension and effectiveness of the car seat harness.

Care & Maintenance

- The cover can be removed and washed with a mild detergent in a washing machine.
- The baby reducer can be washed in the same way as the cover. Remove all foam parts from the top and bottom sections before washing. These must not be washed.
- The shoulder pads can be removed and washed in lukewarm soapy water.
- The plastic parts and the harnesses can be cleaned with soapy water. Do not use any caustic cleaning agents (such as solvents).
- Soak the harness buckle in warm water containing washing-up liquid for at least an hour. Rinse the buckle thoroughly and dry it.

NOTICE

When Using as Universal Category (Group II III)

This is a "Universal" child restraint. It is approved to Regulation No. 44, 04 series of amendments, for general use in vehicles and it will fit most, but not all, car seats.

A correct fit is likely if the vehicle manufacturer has declared in the vehicle handbook that the vehicle is capable of accepting a "Universal" child restraint for this age group.

This child restraint has been classified as "Universal" under more stringent conditions than those applied to earlier designs that do not carry this notice.

If in doubt, consult either the child restraint manufacturer or the retailer.

Only suitable if the approved vehicles are fitted with lap/3 point/static/with retractor safety-belts, approved to UN/ECE Regulation No. 16 or other equivalent standards.

When Using as Semi-Universal Category (Group 0+ I II III)

This child restraint is classified for "Semi-universal" use and is suitable for fixing into the seat positions of the following cars:

CAR	FRONT	REAR
	Outer	Centre
(Model)	Yes	Yes / No

Seat positions in other cars may also be suitable to accept this child restraint. Please refer to the information documents or the retailer's website for the suitable car model list. If in doubt, consult either the child restraint manufacturer or the retailer any time. Only suitable if the approved vehicles are fitted with 3 point safety-belts and ISOFIX attachments, approved to UN/ECE Regulation No. 16 or other equivalent standards.

Notice regarding ISOFIX child restraint system (Group 0+ I. Rearward-facing):

1. This is an ISOFIX CHILD RESTRAINT SYSTEM. It is approved to the Regulation No.44, 04 series of amendments, for general use in vehicles fitted with ISOFIX anchorages systems.
2. It will fit vehicles with positions approved as ISOFIX positions (as detailed in the vehicle handbook), depending on the category of the child seat and of the fixture.
3. The mass group and the ISOFIX size class for which this device is intended is:

D for Group 0+ (0-13kg) & Group I (9-18kg)

Notice regarding ISOFIX child restraint system (Group I, Forward-facing):

1. This is an ISOFIX CHILD RESTRAINT SYSTEM. It is approved to the Regulation No.44, 04 series of amendments, for general use in vehicles fitted with ISOFIX anchorages systems.
2. It will fit vehicles with positions approved as ISOFIX positions (as detailed in the vehicle handbook), depending on the category of the child seat and of the fixture.
3. The mass group and the ISOFIX size class for which this device is intended is:
Group II(9-18kg); Class B1